

Datacolor Select Quick Start

Shipment Contents

(A) Power Cord



(B) Power Adapter



(C) Communications Cable



D) /Measuring Device



(E) Calibration Standard



Power Cable Assembly

1. Connect power cord (A) to power adapter (B).

Power Adapter (B)



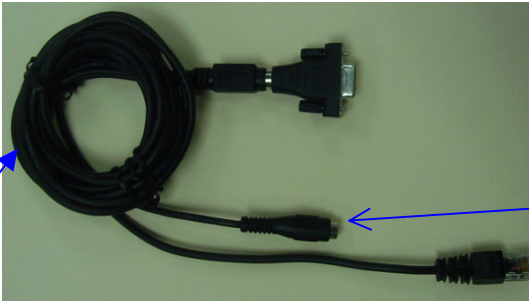
Power Cord (A)



Communications Cable Assembly

1. Connect power adapter (B) to communications cable (C).

Communications Cable (C)



Power Adapter (B)



2. Fully assembled cable shown below:



To power outlet

To instrument

To computer

Install Measuring Device

1. Connect **communications cable (C)** to the **measuring device (D)**.

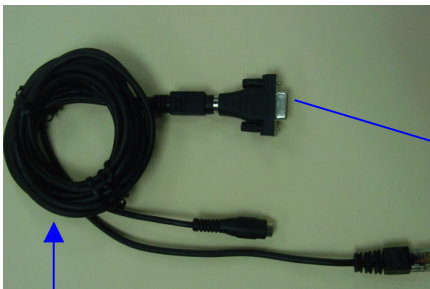
communications cable (C)



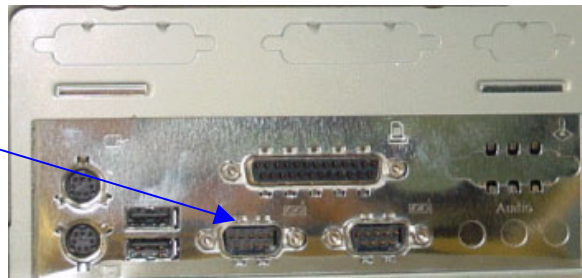
measuring device (D)

Connect to Computer

1. Connect **communications cable (D)** to serial port on computer.



communications cable (C)



Measuring Device Operation

The sample port is an opening on the bottom of the measuring device. The sample being measured should be centered under this port, and completely cover the opening.

The measurement is always started from a button on the computer screen. The sample should be placed securely under the sample port **BEFORE** you press the **Measure** button on the computer screen.

Sample Port



TOP



BOTTOM

Software Installation & Licensing

The Datacolor Select CD includes printed instructions for loading the program. When you have completed this procedure, you will need to register the software with Datacolor. A separate set of Instructions for registering the software are provided with the shipment.

When you complete the software installation, the Hardware/Software Security window will appear:



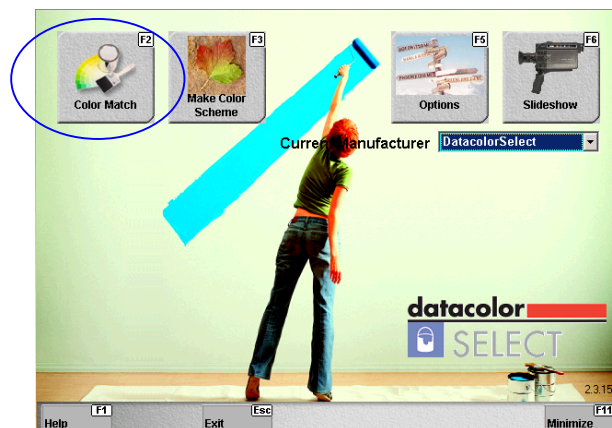
Refer to the licensing instructions to complete this procedure.

Using Datacolor Select

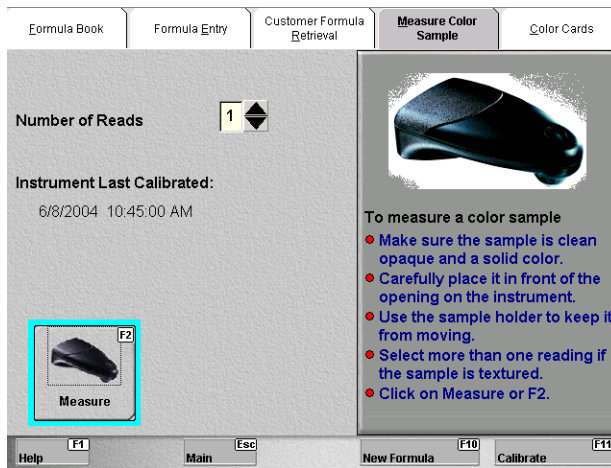
1. To launch the program, click on the **Datacolor Select** icon:



2. The *Datacolor Select* main screen will appear.

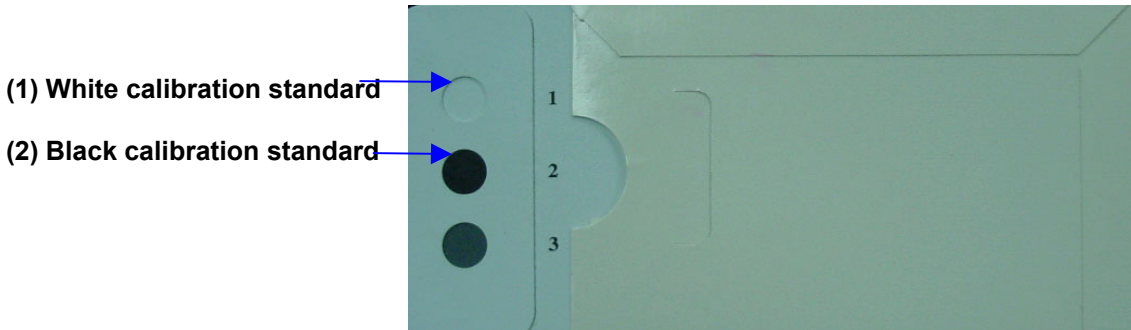


3. From the *Datacolor Select* main screen, click on the **Color Match** button to calibrate the measuring device, or to measure a sample. The *Measure a Color Sample* screen will appear.

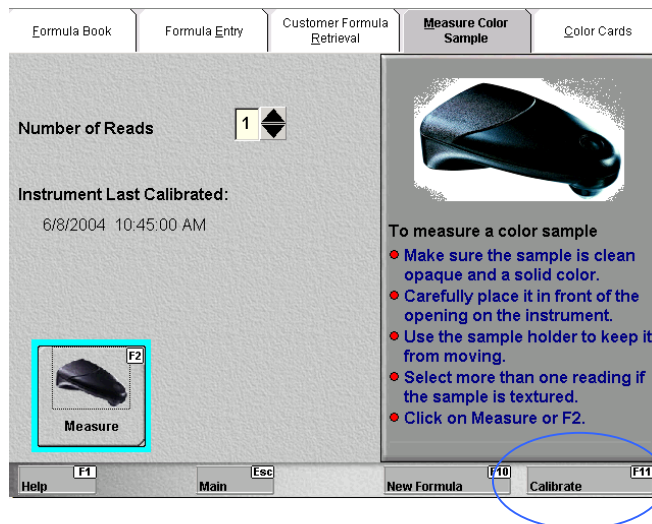


Instrument Calibration

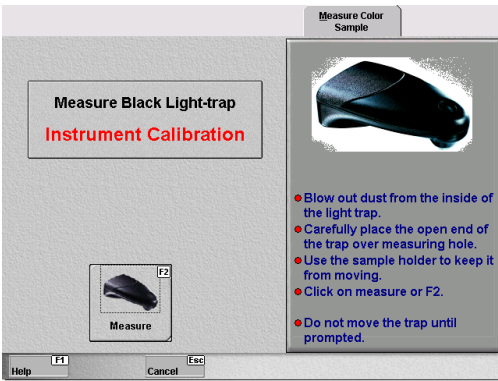
You must calibration the instrument every 8 hours for changes in the instrument performance. The procedure requires the measurement of the black sample and the white sample on the calibration standard:



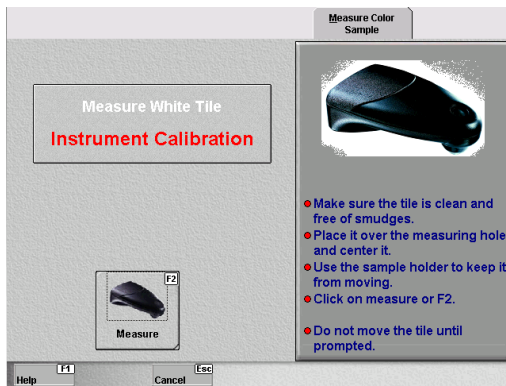
1. To start the instrument calibration, click on the **Calibrate** button at the bottom of the *Measure Color Sample* screen.



2. The program will prompt you for the black calibration standard:

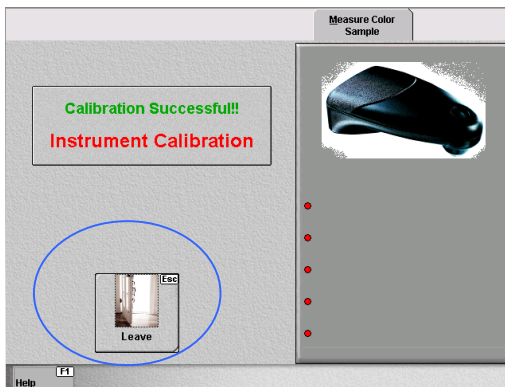


3. Carefully place the black calibration standard under the sample port. When it is properly positioned, click on the **Measure** button on the screen. **DO NOT MOVE THE MEASURING DEVICE.**
4. When the scan is completed, the program will ask for the white standard:

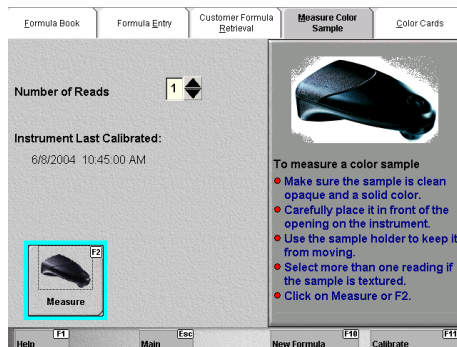


5. Carefully place the white calibration standard under the sample port. When it is properly positioned, click on the **Measure** button on the screen. **DO NOT MOVE THE MEASURING DEVICE.**

When the scan is completed, the program will display the following screen, indicating the calibration was successful:

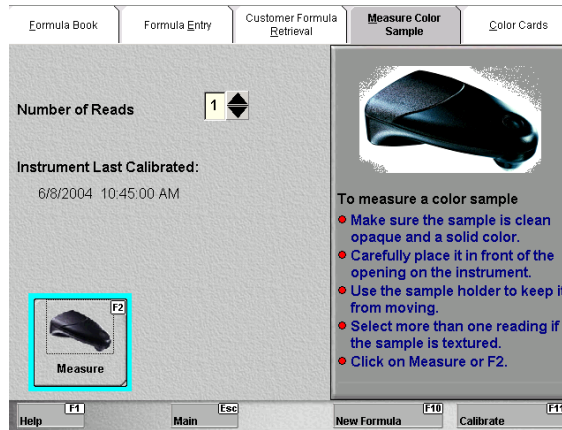


6. Click the **Leave** button. The *Measure Color Sample* screen appears:



Matching Colors

1. From the *Datacolor Select* main screen click on the **Color Match** button. The *Measure Color Sample* screen appears.



NOTE: If you have just calibrated the measuring device, this screen will already be displayed.

2. Place the sample carefully under the sample port, and click the **Measure** button on the screen. When the measurement is completed, the *Closest Color Card Matches* screen will display the best formulas:

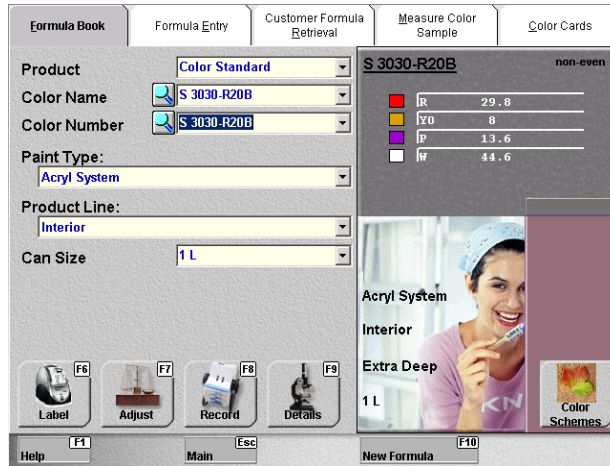
Match Results

| Formula Name | Match Quality |
|--------------|---------------|
| S 4040-R90B | 2.39 |
| S 5030-R90B | 4.52 |
| S 5020-R80B | 5.99 |
| S 5020-R90B | 6.04 |
| S 3050-R90B | 6.42 |

The program will display the 5 closest formulas to match the sample. It will also display the color difference between the formula and the sample for each formula.

- **Back.** Returns to the *Measure a Color Sample* screen.
3. Click on one of the **color standard names** (e.g. S4040-R90B). The screen will refresh and display details about the formula.

Understanding the Formula






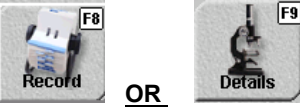




Formula Details

Formula Name: S 3030-R20B
Paint System: Acryl System
Paint Type: Interior
Base: Extra Deep
Can Size: 1L

Ingredient and Amounts

R **29.8**
YO **8**
Purple **13.6**
White **44.6**

Depending on your licensing options, from this screen you can:

| Screen Button | Function |
|---|---|
|  | Match a different color |
|  | Clear the current formula |
|  | Find a different color by name or number |
|  | Store the formula |
|  | Adjust the ingredient amounts |
|  | Print labels |
|  | Access the Color Coordinator |
|  | <ul style="list-style-type: none"> • Change the paint product line • Change the can size <p>To change the selection for any field on the left, click on the down arrow and make a selection from the list that appears.</p> |