

# **Datacolor AutoLab TF**

## **Quick Start Manual**

Part number: TF-0022-0941

**Revision 5.0**  
**1st July 2013**

© Copyright 2005 Datacolor. All Rights Reserved. This material may not be reproduced or copied, in whole or in part, without the written permission of Datacolor.

Whilst every effort has been made to ensure the accuracy of this manual, Datacolor can accept no responsibility for any omissions or errors it may contain. Datacolor reserves the right to make improvements and/or changes in the product(s) features and specifications described in this manual at any time.

<b>CHAPTER 1: Quick Start.....</b>	<b>5</b>
<b>CHAPTER 2: Safety.....</b>	<b>9</b>
<b>Representations and symbols.....</b>	<b>9</b>
<b>Safety recommendations .....</b>	<b>10</b>

### **Document version update log**

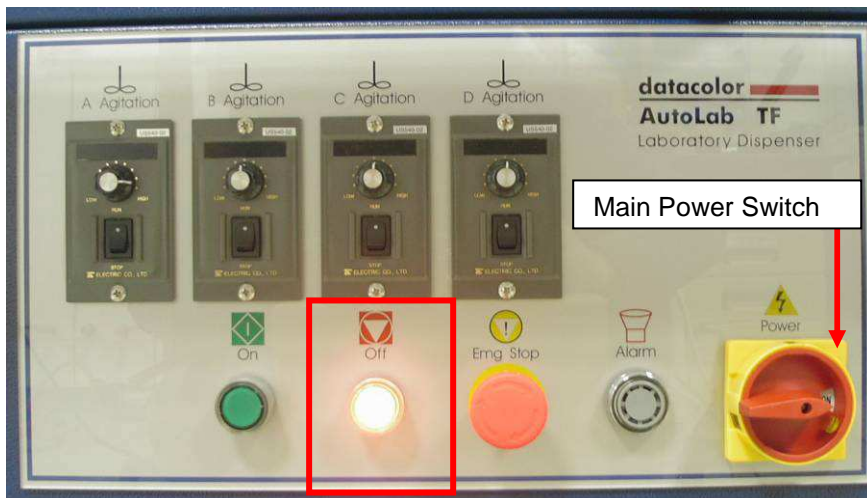
#### Revision 4

New edition manual

#### Revision 5

Change figures of software operation

## CHAPTER 1: Quick Start



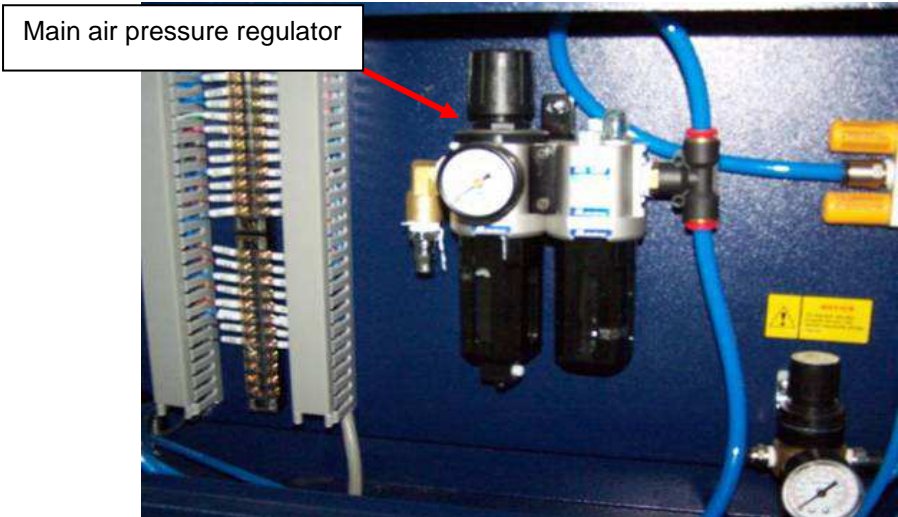
Step 1: Turn on the main power switch, and the “OFF” button will illuminate



Step 2: Press the “ON” button to power up the system. The “ON” button will illuminate



Step 3: Ensure that all agitation controller switches are in the “ON” position



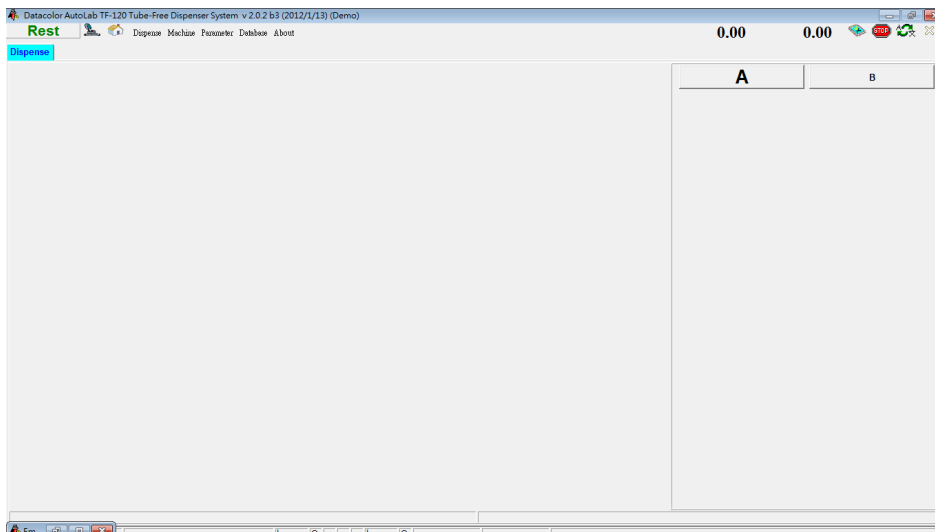
Main air pressure regulator


Step 4: Check to ensure the air pressure is between 4.5~6 kg/cm<sup>2</sup>



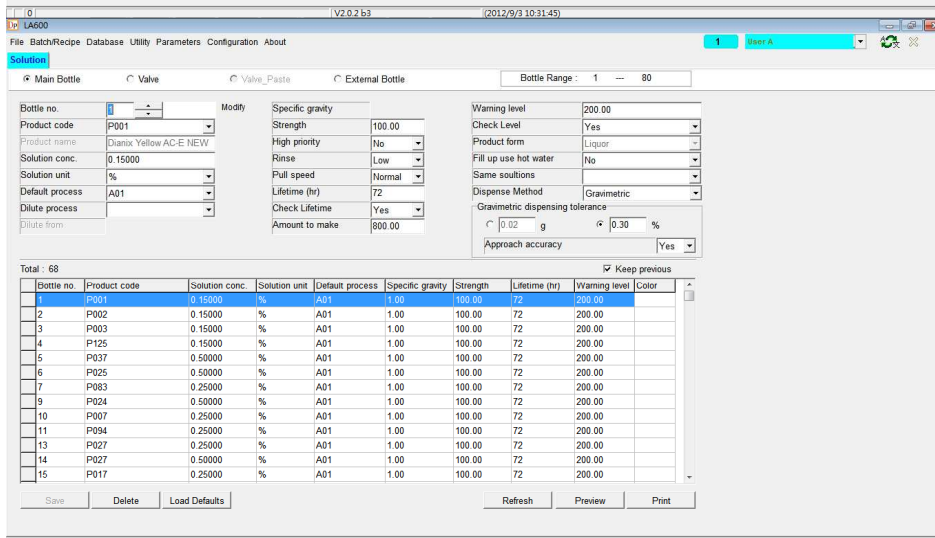
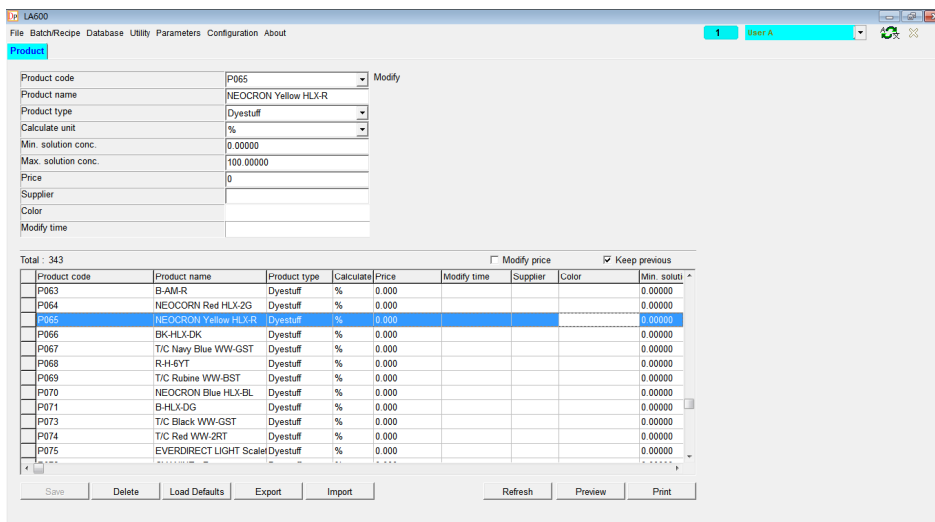
Water pressure regulator

Step 5: Check to ensure the water pressure is between 0.8~1 kg/cm<sup>2</sup>.

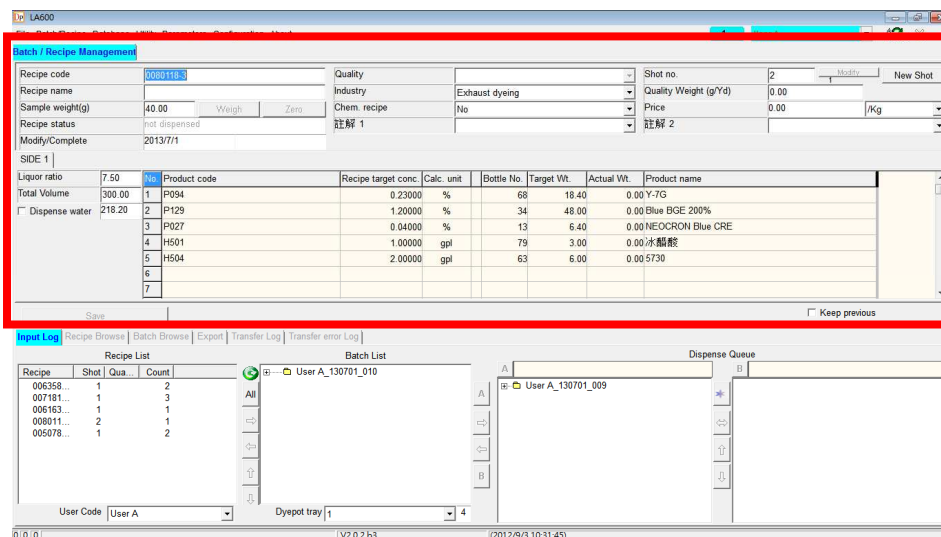


Step 6: Start the AutoLab dispense control program to initialise the system. Once initialised, ensure the system is in run mode by clicking on the  button.

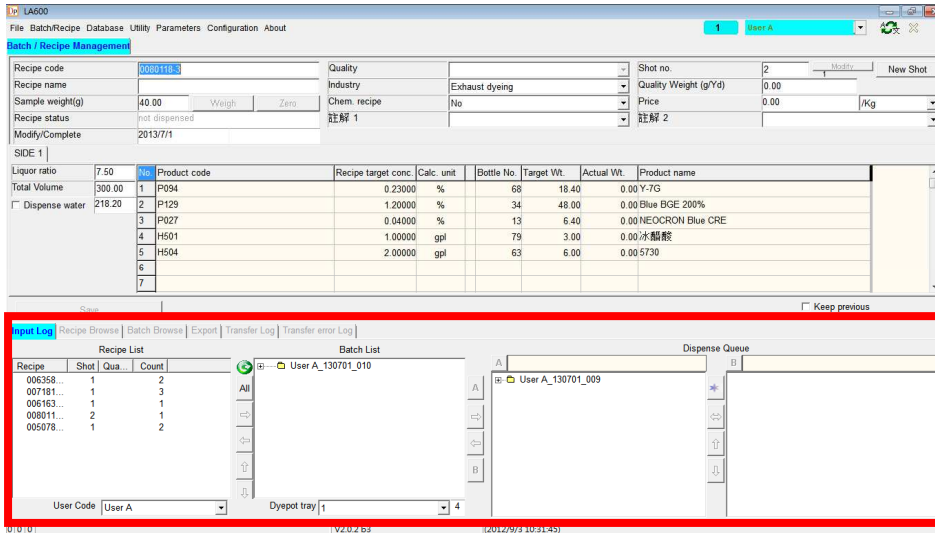
### Step 7: Start the DP program



### Step 8: Screens for creating a product and solution



### Step 9: Screen for creating recipes or importing recipes



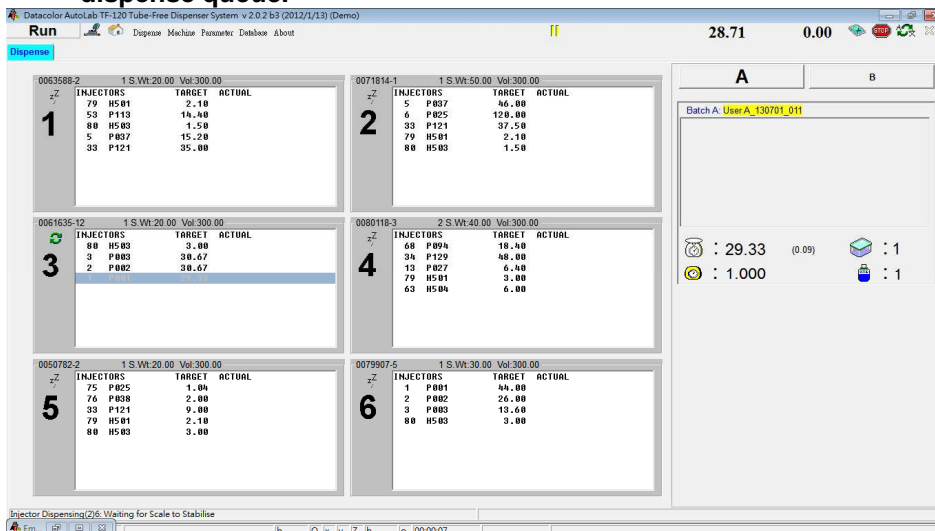
Step 10: Screen for creating batches to dispense



Step 11: For systems with conveyor, put dyept trays containing empty dyeptots onto the inlet conveyor, and the system will then auto-load dyept trays.

For systems with no conveyor, place dyept trays containing empty dyeptots onto the two scale loading positions, and press “CONFIRM” button on the machine to load the dyept tray into dispensing area.

The system will then start to dispense the batches of recipes added to the dispense queue.



Step 12: AutoLab system starts to dispense.



## CHAPTER 2: Safety

---

### Representations and symbols

---



Warning of a possible danger by moving parts, which may lead to serious injury



Warning of a possible electric shock, which may lead to death or serious injury



Tips and important rules on the correct operation of the system.



Warning of a possible risk of being hit by moving parts, which may lead to serious injury.

## **Safety recommendations**

---

- Before turning on the system, make sure that the system operating voltage agrees with the main power voltage.
- If the power cable is damaged, the system must be immediately disconnected from the electric supply.
- If there is any reason to believe that it is no longer possible to operate the system without danger, the system should be immediately disconnected from the electric supply.
- In carrying out maintenance work, it is essentially to heed the maintenance instruction in "Maintenance Guideline".
- If liquid is split into the electric cabinet, connectors or power terminals of the system, the system should be immediately disconnected from main power supply.
- At any time the dispense door warning light is illuminated, you must not open any of the dispense area doors. The light indicates that movement of the z-axis air cylinder is in progress, which cannot be automatically immediately stopped by the interrupt device on the safety doors, when the doors are opened. Opening the doors when the light is on may lead to injury, if someone reaches into the dispense area around the vertically moving z-axis robotic arm.
- Do not put anything inside the main frame of the system that is not intended for use with the system
- If any emergency situation should happen, press the "Emergency Button" on the electric cabinet panel to stop the system immediately.